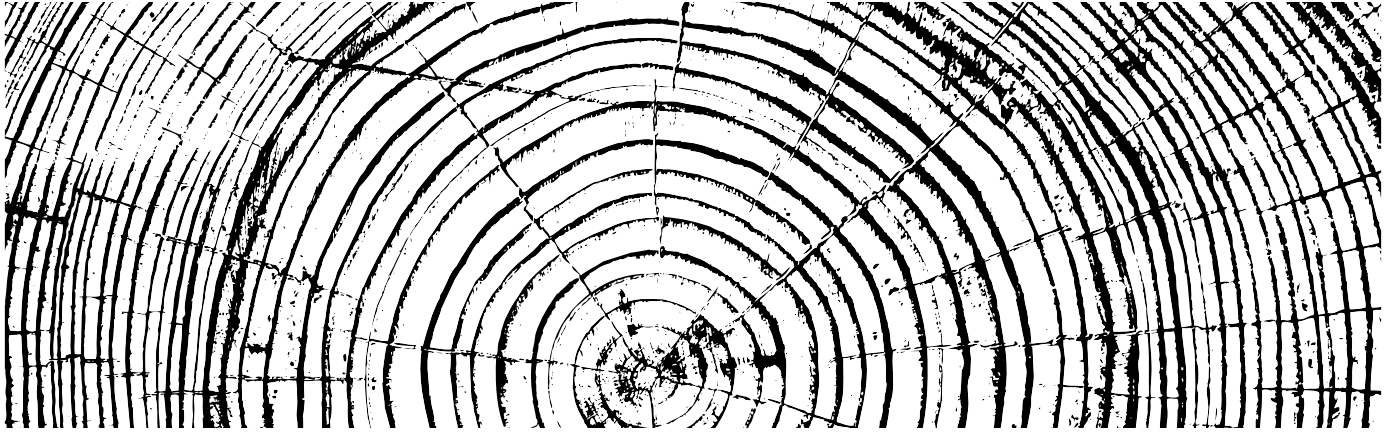


**FLOOR<sup>®</sup>  
EXPERTS**

Wood flooring collection  
**Heritage Castle**





# Beauty of Wood

We know that flooring is a very important part of your home, presenting and expressing your personality. That is why we are doing our best to help you choose the right floor for you.

The quality of all residential and commercial areas mostly depends on the proper selection of flooring. In our sales programme you can find a little bit of everything for all kinds of characters; from cool and peaceful, warm and playful, joyful and cheerful, wild and bold, modern and traditional, rustic and antique, to rural and provincial.

Listen to your feelings and make a choice with taste and style.



# Grade



## **Grade ABC - natural**

Unique structure and colour and sapwood allowed, imperfections like small knots are limited or not present, no cracks present.



## **Grade DE/EF - extra rustic**

All natural imperfections and slight irregularities in wood allowed, unlimited number of cracks and knots filled (open or closed) with a black or natural colour filler.



# Surfaces



## **Smooth**

Surface is only sanded and coated with lacquer or oil. No additional surface treatment has been made, so the wood texture can be seen as it naturally is.



## **Brushed**

We removed soft wood from the surface with brush rollers so that only hard wood remained. Surface is now harder and more robust. Due to brushing the surface is also more resistant to scratches and impacts.



Extra Wide planks  
**Heritage Castle**









# Louvre.

*/Castle*

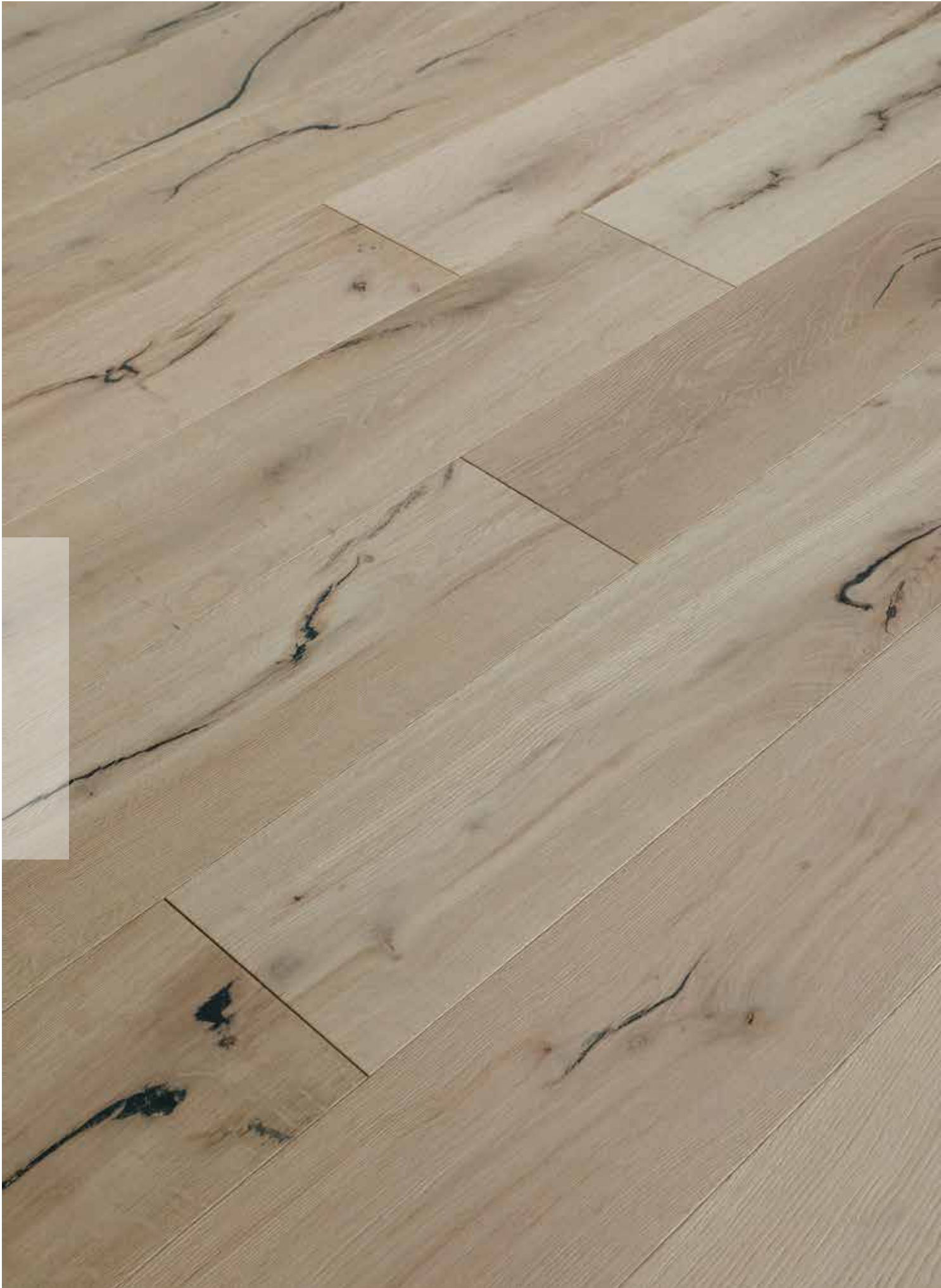
**15/4 x 240/260 x 2200 mm**

Grade - Oak DE

Surface - Deep Brushed, Smoked

Finish - Natur Oiled







# Windsor.

*/Castle*

**15/4 x 240/260 x 2200 mm**

Grade - Oak DE

Surface - Deep Brushed

Finish - UV Lacquered





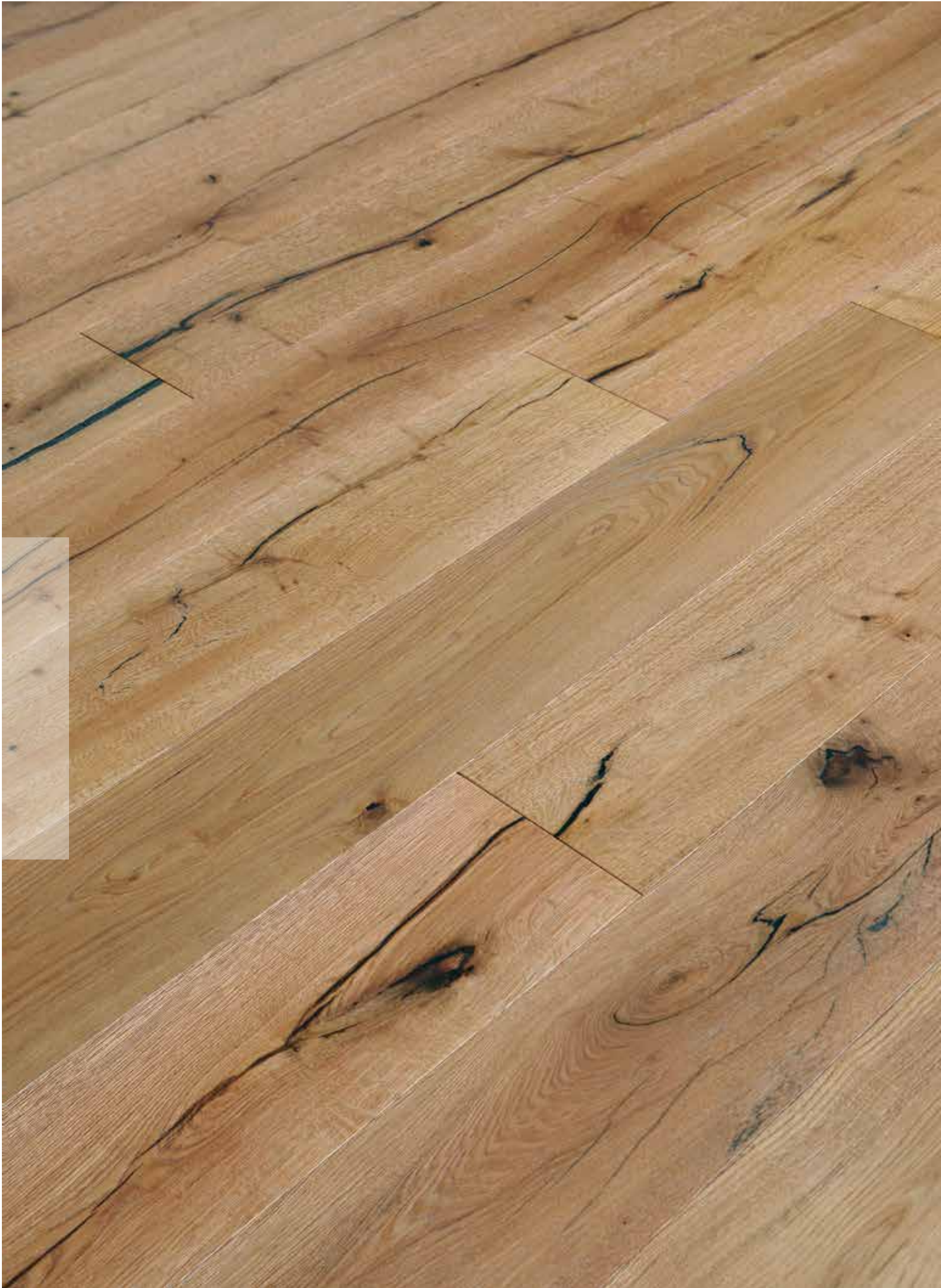


**15/4 x 240/260 x 2200 mm**  
Grade - Oak ABC  
Surface - Brushed  
Finish - Natur Oiled

# Avignon.

*/Castle*





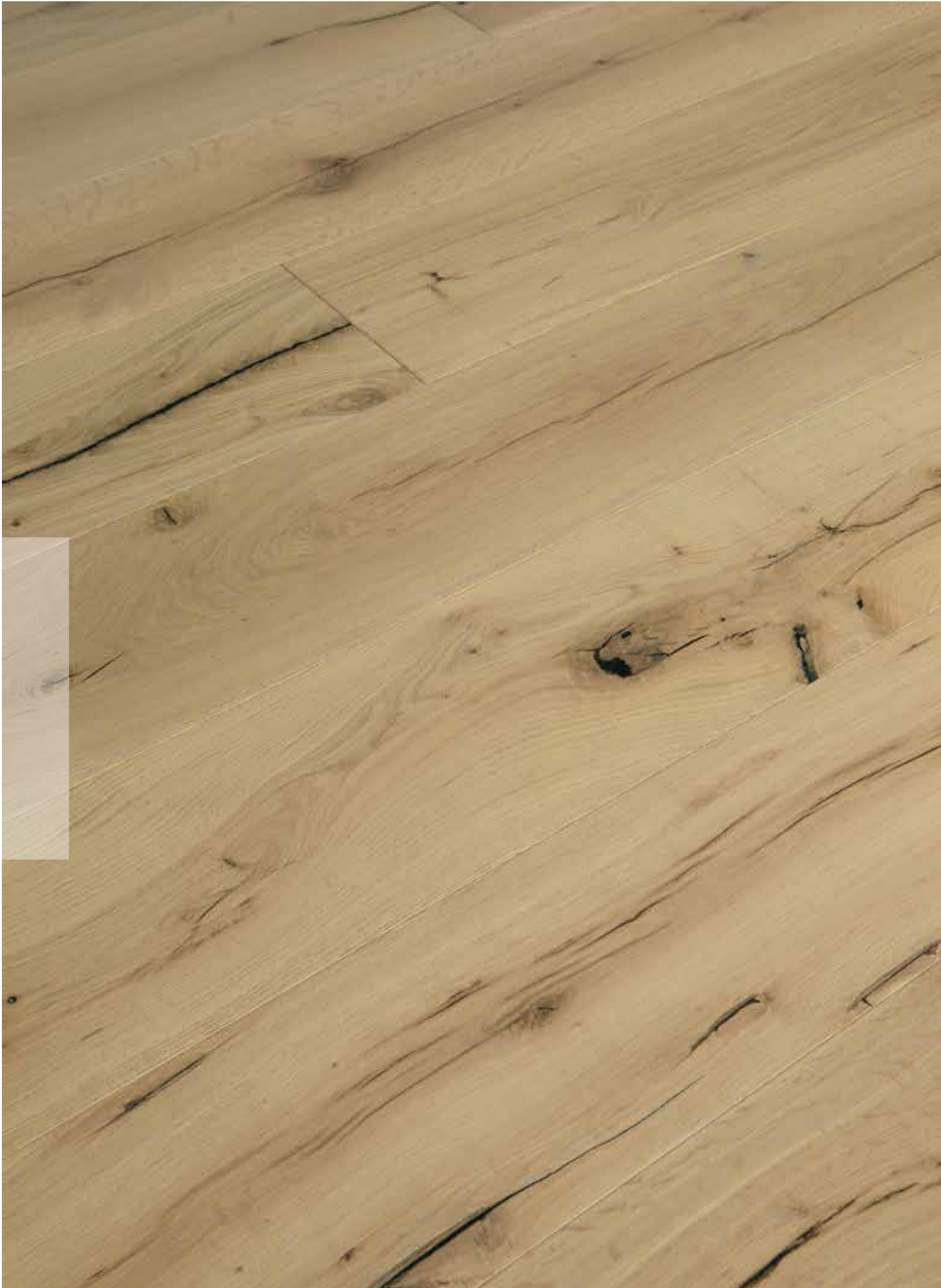


**15/4 x 240/260 x 2200 mm**  
Grade - Oak DE  
Surface - Deep Brushed  
Finish - Nature Oiled

# Burgundy.

*/Castle*







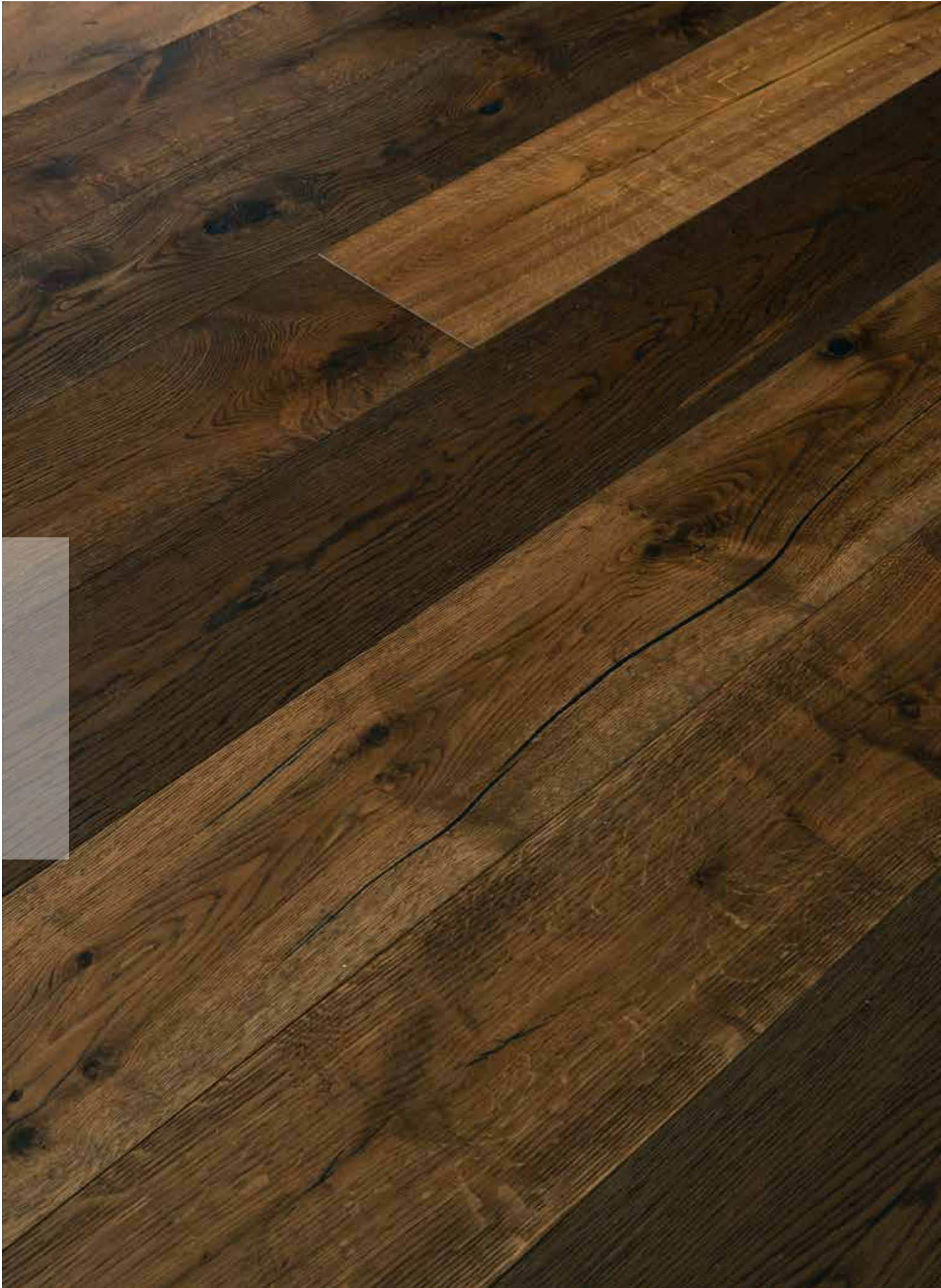


**15/4 x 240/260 x 2200 mm**  
Grade - Oak DE  
Surface - Brushed  
Finish - Ivory Lacquered

# Oxford.

*/Castle*







# Versailles.

*/Castle*

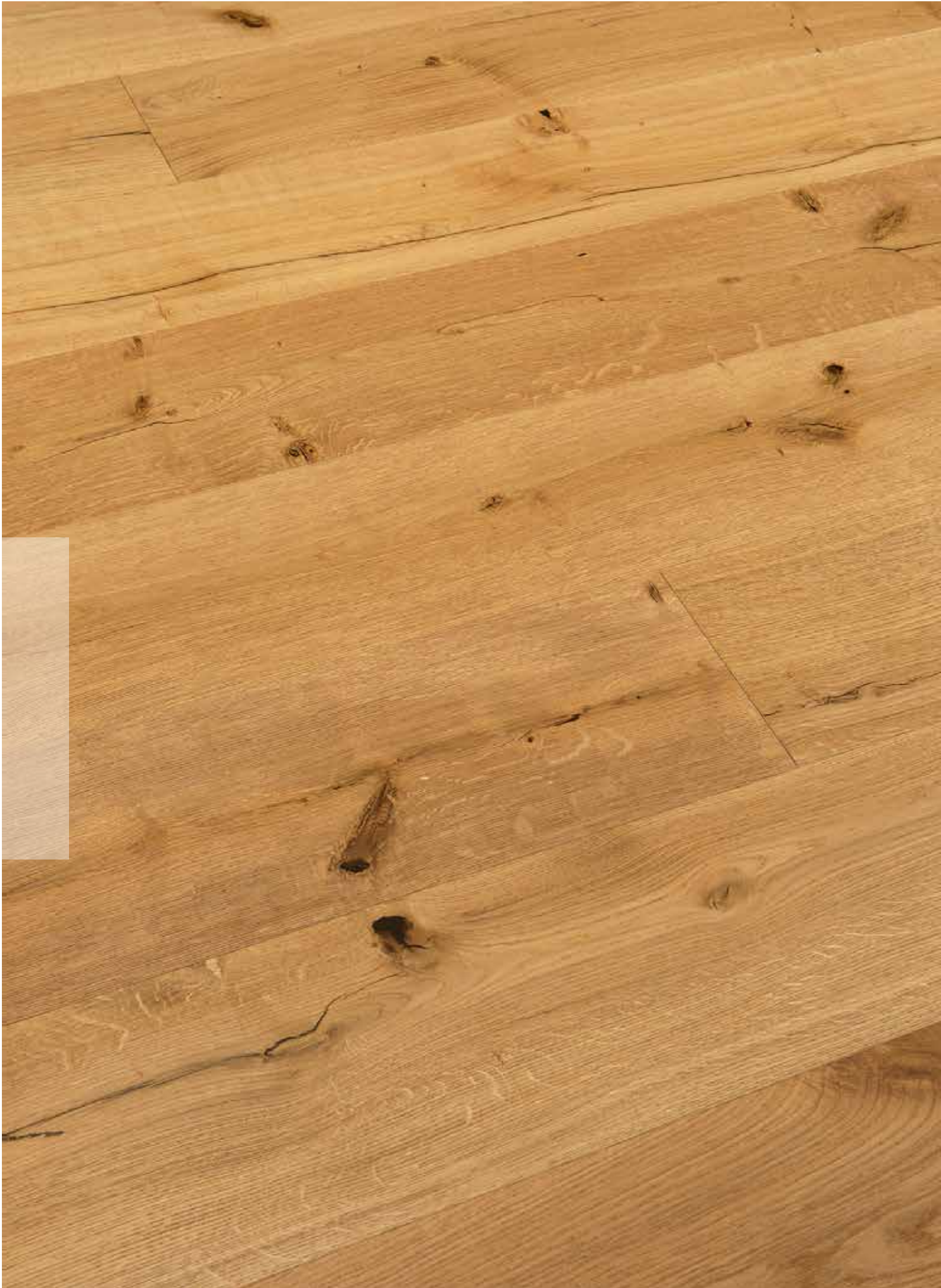
**15/4 x 240 x 2200 mm**

Grade - Oak DE

Surface - Brushed

Finish - Dark Smoked Lacquered







**15/4 x 240 x 2200 mm**  
Grade - Oak EF  
Surface - Brushed  
Finish - Natur Oiled

# Edinburgh.

*/Castle*



# Dimension:

<b>15/4 x 240 x 2200 mm</b>	Versailles, Edinburgh
<b>15/4 x 240/260 x 2200 mm</b>	Louvre, Windsor, Avignon, Burgundy, Oxford

**\*NOTE** / Lengths: 15%-20% shorter length allowed.

# Surface:

<b>Brushed</b>	Avignon, Edinburgh, Oxford
<b>Deep Brushed</b>	Burgundy, Windsor
<b>Deep Brushed, Smoked</b>	Louvre, Versailles

# Finish:

<b>UV Lacquered</b>	Windsor, Oxford, Versailles
<b>Natur Oiled</b>	Avignon, Burgundy, Louvre, Edinburgh

# Grade:

<b>ABC</b>	Avignon
<b>DE</b>	Burgundy, Louvre, Windsor, Oxford, Versailles
<b>EF</b>	Edinburgh

# Declaration of Performance:

Characteristic	Declared performance	Corresponding harmonized standards
Density and thickness:	650 kg/m <sup>3</sup> - 15/4 mm	EN 14342:2013
Dimension:	15/4, 2200 x 240 / 260 mm	EN 14342:2013
Reaction to fire:	Dfl-s1	EN 14342:2013; EN 13501-1:2007+A1
Emission of formaldehyde:	E1	EN 717-2:1996/AC:2002; EN 120:1996
Breaking strength (max load):	NPD	EN 1533:2010
Slipperiness:	NPD	EN 1339:2003, Annex J
Thermal conductivity:	0,163 W/m <sup>2</sup> K	EN ISO 10456
Biological durability:	Class 4	EN 350-2; EN 351-1
Determination of PCP content:	No detectable, PCP < 5PPM	CEN/TR 14823
Moisture content:	7%±2%	EN 13183-1:2002

The images in this brochure are only indicative of the appearance you can achieve and the floor may look different to the samples. We therefore suggest you visit your supplier to view larger display of boards which will give a better indication of how it will actually look.

**Underfloor heating:** Not all flooring is suitable for underfloor heating. Due to a multi-layered composition of the Heritage Dream parquet flooring heat conduction is good and the flooring can easily be used on underfloor heating systems.

